



MARITIME TRAINING CAPABILITY STATEMENT



GOVERNMENT OF
WESTERN AUSTRALIA



South
Metropolitan

MARITIME TRAINING CAPABILITY STATEMENT

Western Australia's South Metropolitan TAFE (SM TAFE) has been providing internationally recognised maritime vocational training in both coastal and ocean seafaring for over twenty years from the Fremantle campus. Flexible delivery options are offered in a range of short courses, skill sets, traineeships and qualifications from certificate II to advanced diploma. By leveraging industry partnerships SM TAFE incorporates current practices and standards to meet the needs of the contemporary and global maritime industry including the oil and gas, shipbuilding and defence industries.

Situated in the port city of Fremantle, SM TAFE's maritime campus includes some of the most comprehensive facilities for training in the country, with advanced training equipment and highly experienced and qualified lecturing staff. SM TAFE's maritime training integrates simulator technology, a fleet of three vessels, biological and computing laboratories, along with engineering, seamanship and aquaculture workshops.

Local and international students can realise their career goals acquiring current knowledge and extensive practical experience in areas such as watchkeeper, marine engineer and master unlimited.



Areas of specialisation

- Oil and gas cargo management
- Ship bridge management
- Port control and pilotage systems
- Maritime resource management
- ECDIS (Electronic Chart Display Information System)
- GMDSS (Global Maritime Distress and Safety System)
- Medical care for shipmasters
- Port and offshore facility security
- Maritime and fishing operations
- Aquaculture.

World-class facilities

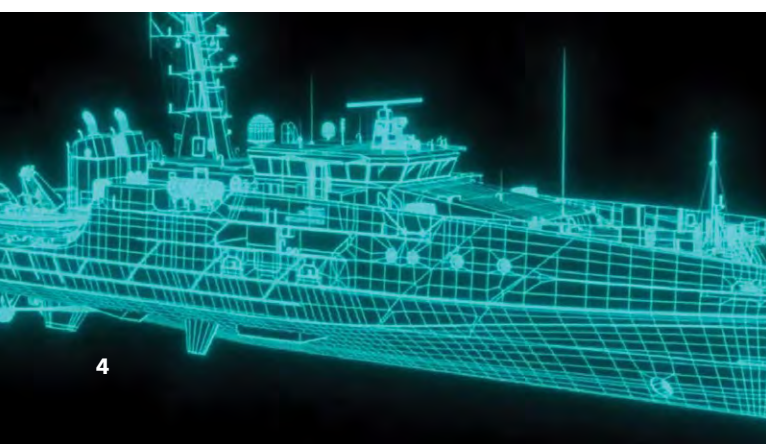
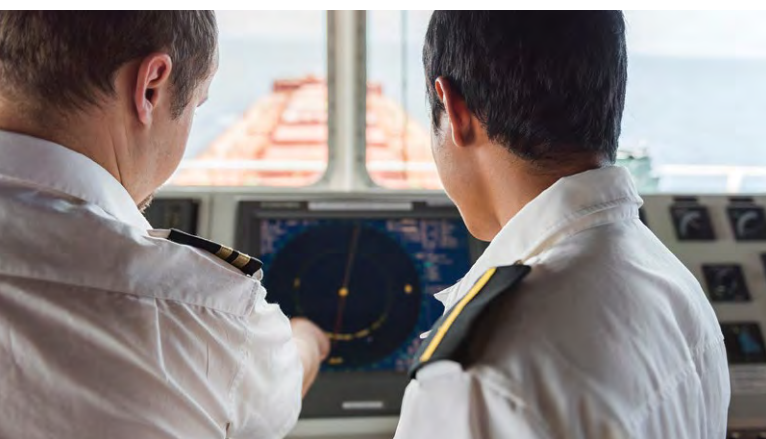
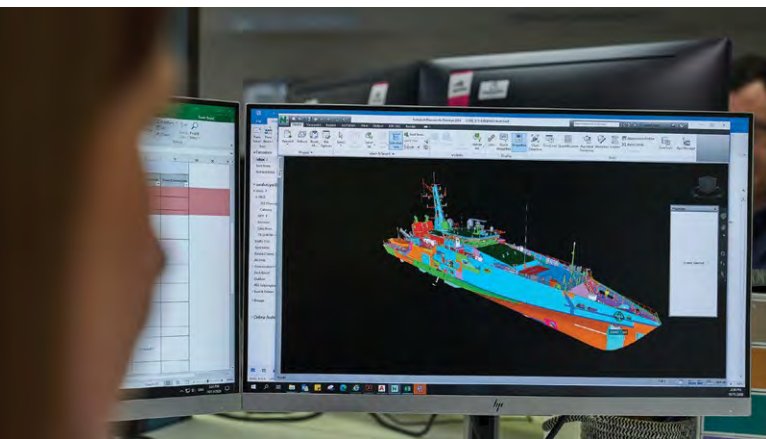
SM TAFE's ship, bridge and engineering simulator training suite is used in advanced maritime operations and engineering training such as navigation, cargo handling, vessel and engine room operations, and maintenance. The Kongsberg and Wärtsilä simulators assist in training future shipmasters, officers and engineers. Using simulated port and ship databases, trainees acquire skills in navigating and operating in varied environments. The technology features the most advanced mathematical modelling and shipping databases in the world and the hardware replicates the current equipment installed on seagoing ships.

Setting the standard

SM TAFE offers programs that have been approved by the Australian Maritime Safety Authority (AMSA) in accordance with the International Convention on Standards of Training, Certification and Watchkeeping for Seafarers (STCW), and the International Maritime Organisation (IMO).

SM TAFE also holds Security Clearance under the Defence Industry Security Program and is a preferred provider of the Naval Shipbuilding College.





Customised training solutions and consultancy

SM TAFE offers the following workforce capability and skilling solutions to industry, employers and individuals.

CONSULTANCY

SM TAFE provides services such as training needs analysis, professional development and customisation of training solutions.

VERIFICATION OF COMPETENCY (VoC)

VoC is an assessment of an employee's knowledge and skills in industry specific processes. VoC assists employers to deem their staff competent to perform certain work-related tasks. Assessments may be undertaken at the employees' place of work to minimise disruption to productivity. SM TAFE uses online learning management systems and/or remote assessments as required.

RECOGNITION OF PRIOR LEARNING (RPL)

RPL involves the assessment of an individual's relevant prior learning (including formal and informal learning) to determine how much of this prior learning may contribute to an individual's application for credit towards all or part of a qualification.



GLOBAL POSITIONING AND TRAINING PARTNERSHIPS

SM TAFE has a proven track record of collaborating with industry to provide training and workforce development solutions for organisations including Shell, Rio Tinto, Royal Oman Police, MMA Offshore Marine, BHP, INPEX and Australian Offshore Solutions. Examples include:

- Royal Oman Police, Coast Guard Division**
 Specialised training was designed for the Coast Guard Division of the Royal Oman Police, providing them with practical, hands-on training in navigation of high-speed vessels, coastal navigation, seamanship as well as safety and environmental work practices on board a vessel. This customised training ensured the Coast Guards returned to Oman with the knowledge and capabilities to thrive in their maritime careers.
- Shell Australia**
 SM TAFE have been providing training for Shell Australia maritime personnel over the past three years in the areas of navigation and ship handling using our Kongsberg bridge simulator. Our specialised facilities are used to develop skills in ship manoeuvring, radar plotting, passage planning, automatic identification systems and electronic charts. The seafarers are trained in critical skills for the resources and maritime industries with increased safety and efficiency in ship and port outcomes.
- Defence Industry Pathways Program**
 The nationally recognised Certificate III in Defence Industry Pathways qualification was developed by SM TAFE in 2021 on behalf of the maritime defence industry. With the increasing demand for workers in the shipbuilding industry in Western Australia, this program offers participants a defence industry 'taster' to assist in the selection of a career pathway into the industry. Participants complete a 12-month traineeship with industry partners in the Henderson shipbuilding precinct.

Short courses and skill sets

Short courses and skill sets provide smaller, specific learning that may provide credit towards a qualification. These are scheduled regularly throughout the year or can be tailored for corporate groups, seafarers and organisations.

SKILL SETS

- Advanced Fire Training (manage firefighting and fire prevention activities on board a vessel)
- Basic Fire Training (fire prevention and fire fighting)
- CoST (Certificate of Safety Training)
- ECDIS (Use an Electronic Chart Display and Information System to navigate safely)
- ESS (Elements of Shipboard Safety)
- GMDSS (transmit and receive information by the Global Maritime Distress and Safety System)
- Marine Radio Operator's VHF and HF
- Medical Care (manage provision of medical care on board a vessel)
- Provide medical first aid on board a vessel
- PSC (Proficiency in Survival Craft)
- Security Awareness (follow vessel security procedures)
- Work safely in confined spaces on a vessel
- Watchkeeper Deck Command Module (for upgrade to Master under 500GT).

SHORT COURSES

- Advanced Training for Chemical Tanker Cargo Operations
- Advanced Training for Liquefied Gas Tanker Cargo Operations
- Advanced Training for Oil Tanker Cargo Operations
- AMPA Coxswain
- AMPA Master Under 24m
- AMPA MEDII
- GMDSS Revalidation
- Masters Revalidation Part A
- Masters Revalidation Part B
- Engineering Revalidation Part C
- Tanker Familiarisation (Liquefied Gas Tanker)
- Tanker Familiarisation (Oil and Chemical).

As well as short courses, we can customise training to meet the specific training requirements and needs of seafarers and organisations.

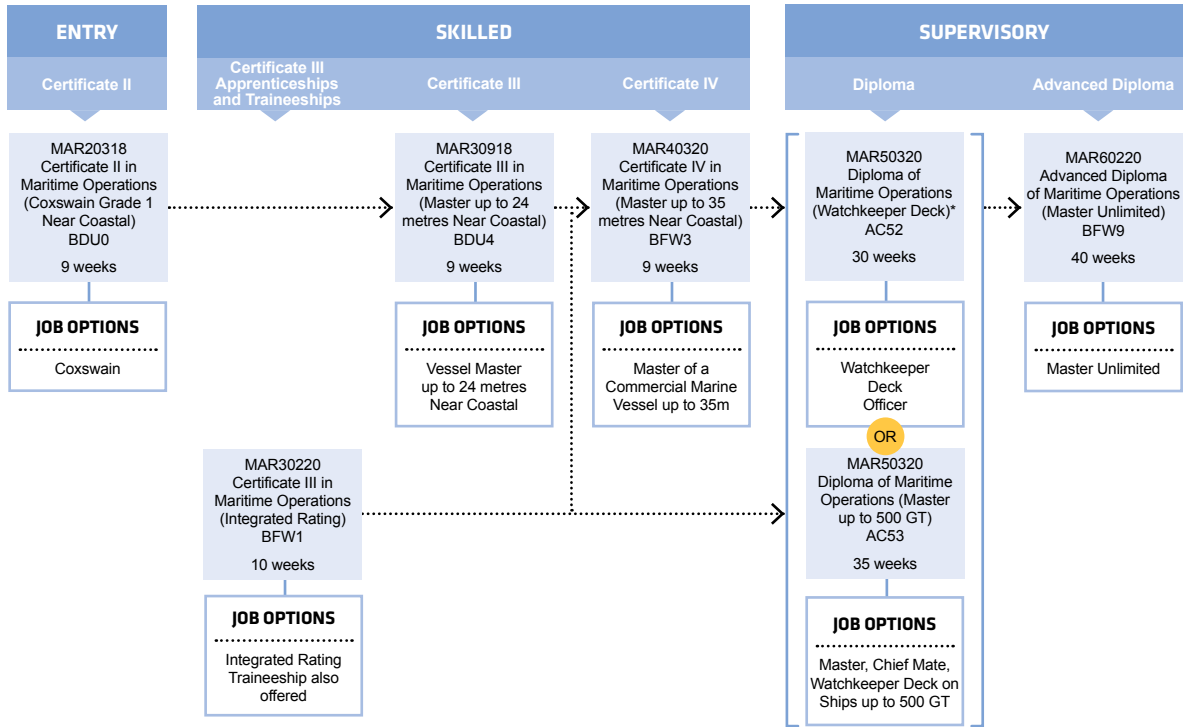
Please note:

The enrolment pathways and content of these programs will vary to meet the requirements of the Australian Maritime Safety Authority (AMSA).

CAREER PATHWAYS

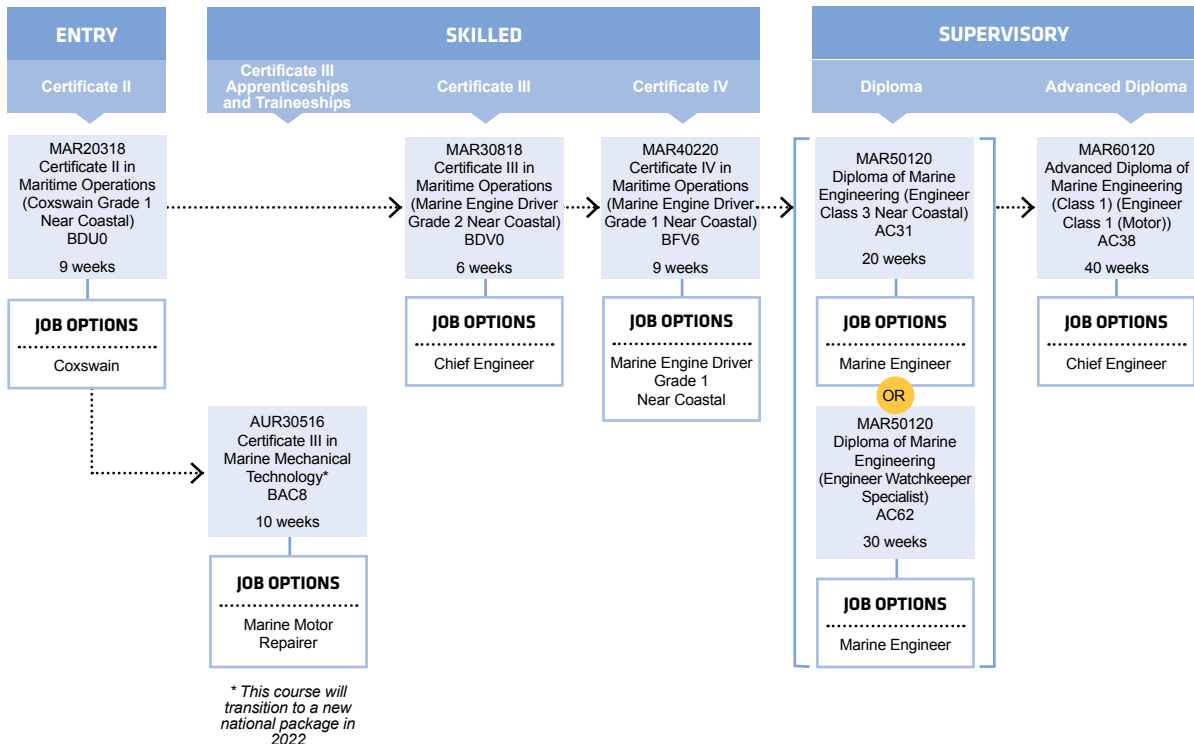
MARITIME OPERATIONS – MASTER AND DECK PATHWAYS

This is an example of the maritime operations – master and deck career pathway options with job outcomes at each qualification level.



MARITIME OPERATIONS – ENGINEERING PATHWAYS

This is an example of the maritime operations – engineering career pathway options with job outcomes at each qualification level.



Please visit the Australian Maritime Safety Authority (AMSA) website for details regarding required sea service and additional requirements. <https://www.amsa.gov.au/qualifications-training>



University articulation

PATHWAY 1

Advanced Diploma of Maritime Operations to Bachelor of Applied Science (Nautical Science)

The conversion pathway provides an opportunity for Australian and International Ship Officers to convert their existing professional and academic qualifications to a Bachelor of Applied Science (Nautical Science).

To be eligible students must have completed:

- STCW Management level (Master Class 1/ STCW A-II/2) studies; and
- MAR60220 Advanced Diploma of Maritime Operations (Master Unlimited)

PATHWAY 2

Advanced Diploma of Maritime Operations to Bachelor of Applied Science (Marine Engineering)

The conversion pathway provides an opportunity for Australian and International Ship Officers to convert their existing professional and academic qualifications to a Bachelor of Applied Science (Marine Engineering).

To be eligible students must have completed:

- STCW Management level (Chief Engineer Class 1/ STCW A-III/2) studies; and
- MAR60120 Advanced Diploma of Marine Engineering (Class 1) Pathway Engineer Class 1 (Motor) Specialist.

For either pathway eligible students will need to complete six units with the Australian Maritime College (AMC). Delivery is flexible. International and domestic students can choose to complete via distance study or attend Launceston Tasmania campus to complete any of their chosen units.

For further information please contact AMC on www.amc.edu.au



Maritime Training



1800 001 001



info@smtafe.wa.edu.au



southmetrotafe.wa.edu.au

Fremantle Campus, 1 Fleet Street, Fremantle WA 6160